

VEV12-80

12V 80 Ah / 10h

BATTERY
Samson

Introduction

Samson VEV AGM Series is designed for tough applications and repeated deep discharging. It is superior with the long cycle life, large current discharge capability, high reliability and safety. The range is the definitive choice for golf cart, electric medical equipment, automated guided vehicles (AGV), aerial lifts, floor cleaning equipment, robotics applications.

Battery Features

- Extra long cycle life and resistance to mechanical stress and the elements all in one battery.
- Maintenance-free
- Very high purity lead (purity rate 99.994%)
- Traction heavy duty grid design gives consistent active material adhesion and corrosion resistance.
- Fully tank formed plates for evenly formed and capacity matched plates.
- Low impurity electrolyte
- Recognized gas recombination efficiency greater than 99.9%
- Flame arresting pressure regulated safety sealing valves for safety.
- Low self-discharge
- Classified as non-spillable and not restricted for transportation by
 - > Air (IATA/ICAO provision 67)
 - > Surface (DOT-CFR-HMR49)
 - > Water (per IMDG amendment 27)

Electrical Specification

Design floating Life @ 25°C / 77°F 10 years

Design Life Cycles @ 80% D.O.D. (25°C) 450 Cycles

Nominal Capacity @ 25°C / 77°F

100	hour rate	0.96 to 1.75Vpc	96 Ah
10	hour rate	8.0 A to 1.75Vpc	80 Ah
5	hour rate	14.4 A to 1.75Vpc	72 Ah
3	hour rate	21.33 A to 1.70Vpc	64 Ah
1	hour rate	47.5 A to 1.60Vpc	47,5 Ah

Minutes of Discharge

25A to 10.5V	149	56A to 10.2V	57.6
75A to 10.2V	40.8	85A to 10.2V	32
100A to 10.2V	25.6		

Cranking Amps

0°C / 32°F 400

Cold Cranking Amps

-18°C / 0°F 370

Internal Resistance

(Fully charged battery @ 25°C / 77°F) 8 mΩ

Max. Discharge Current @ 25°C / 77°F 550 A (5S)

Short Circuit Current 1400 A

Charge Methods: Constant voltage charge @ 25°C / 77°F

Cycle Use	14.7 ~ 14.9V
Max. Current	22.0 A
Max. Current for best battery life	18.0 A
Standby Use	13.6 - 13.8V

Operating Temperature Range

-20 ~ 60°C

Notes: battery voltage must be adjusted according to temperature.

Please refer to our recommendation.

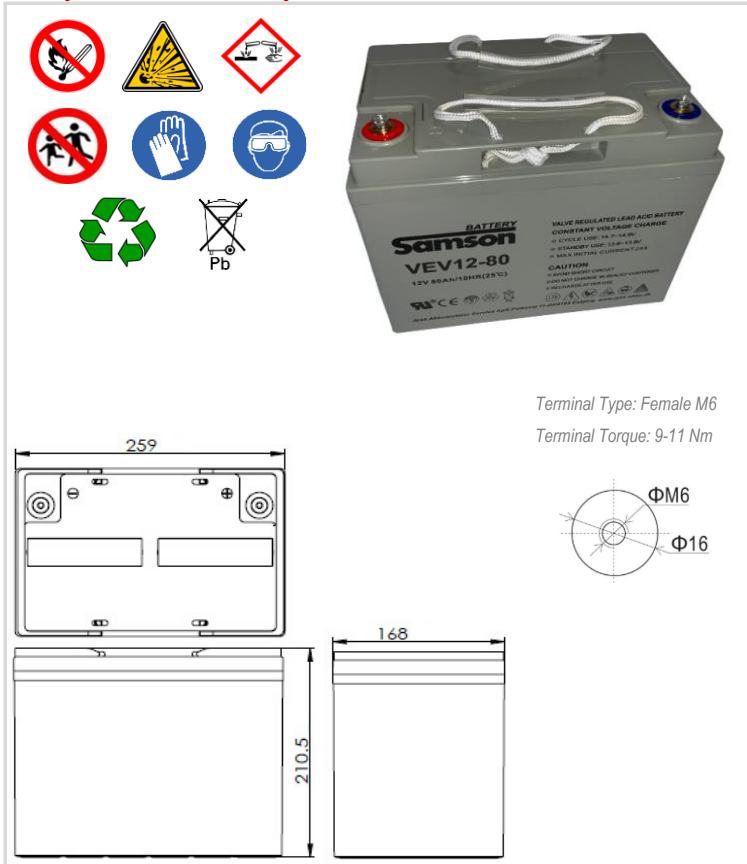
Self-Discharge

3% of capacity declined per month @ 25°C (77°F).

Subject to revision without notice. Please contact our sales representatives for latest version.

Web: www.jysk-akku.dkE-mail: jvba@jysk-akku.dk

Battery Picture & Terminal Layout



Terminal Type: Female M6

Terminal Torque: 9-11 Nm

Dimension & Weight

Length	Dimension (± 2mm)			Weight (± 2%)
	Width	Height	Total Height	
260 mm	170 mm	210 mm	215 mm	24,8 kg
10,2 inch	6,7 inch	8,3 inch	8,5 inch	54,7 lbs

Typical Applications

- Golf Cart and Trolley
- Emergency Power Supply
- Emergency lighting
- Electric Medical Equipments
- Aerial and Fork Lifts
- Tour Bus
- Sweeper
- Floor Cleaning Machines
- Marine and RV
- Automated guided vehicles (AGV)

Other relevant information

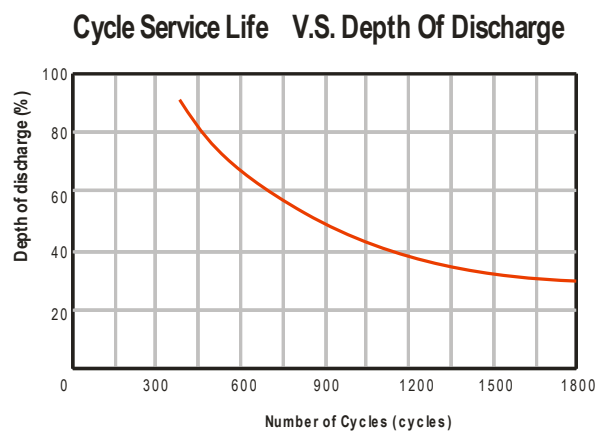
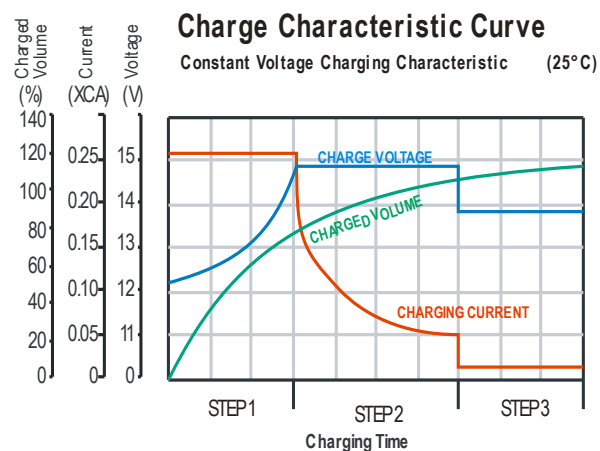
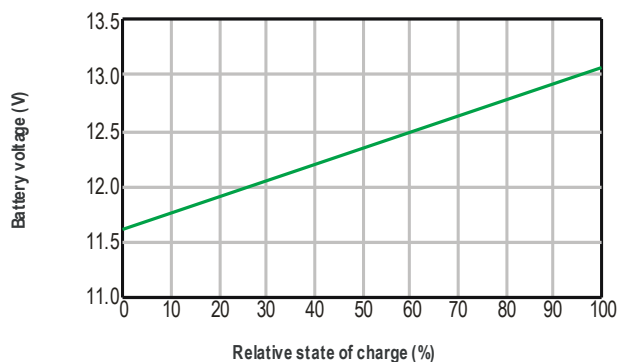
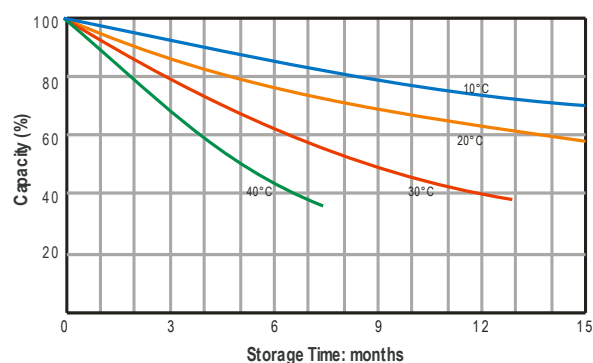
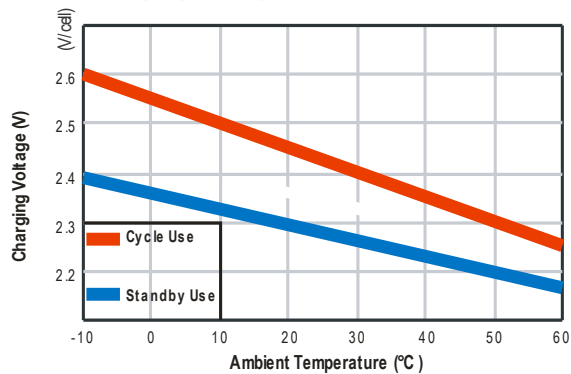
Contry of origin: China HS Code (harmonized system code): 85 07 20 00

UN-Transport declaration: UN2800 Customs tariff number 8507 10 20 80

Hazardous materials contents (Table B: Lead and lead compounds): 17,36 Kg

Certificates



VEV12-80**12V 80 Ah / 10h****BATTERY**
Samson**Graphs****OCV V.S. State of Charge (20°C)****Self-Discharge Characteristic****Charging Voltage V.S. Temperature****Temperature Effects On Capacity**