

# VEB12-5 F2

12V 5Ah / 10h



## Introduction

Samson EB series is designed for European standard with 5-year design life in float service. The series battery is featured of high consistency, excellent performance and reliable standby service life. It is widely applied in UPS/EPS, medical equipment, emergency light and security system.

## Battery Features

- Low self-discharge
- Fully tank formed plates
- Low impurity electrolyte
- Spill proof / leak proof
- Multi-position usage
- ABS case and cover VO upon request
- Very high purity lead

## Electrical Specification

Design floating Life @ 20°C (68°F)	5 years
Design Life Cycles @ 80% D.O.D. (25°C)	250 Cycles
Nominal Capacity @ 20°C /68°F	
20 hour rate 0.27A to 1.75Vpc	5.4 Ah
10 hour rate 0.5A to 1.80Vpc	5 Ah

## Internal Resistance

(Fully charged battery @ 20°C /68°F )	25 mΩ
Max. Discharge Current @ 20°C /68°F	75 A (5S)
Short Circuit Current	80 A

## Charge Methods: Constant voltage charge @ 20°C /68°F

Cycle Use	14.7 ~ 14.9V
Max. Current	1.50 A
Max. Current for best battery life	1.21 A
Standby Use	13.6 - 13.8V

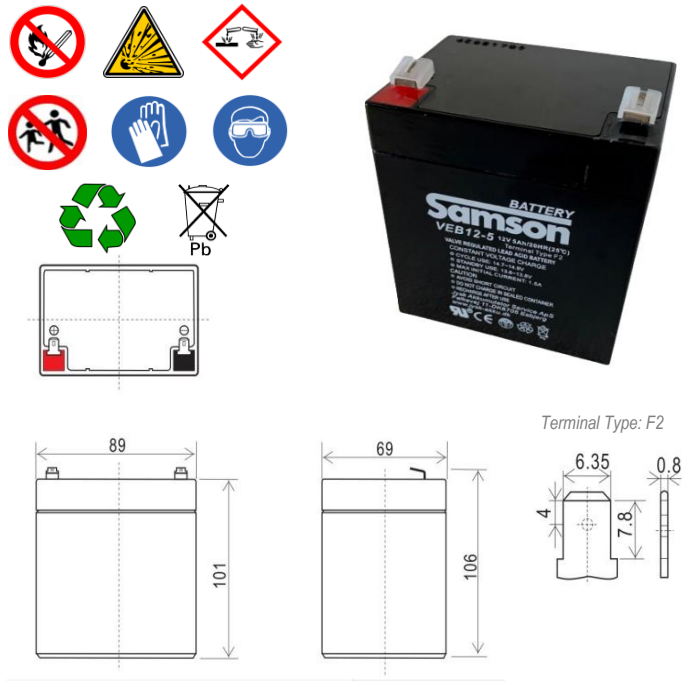
## Operating Temperature Range

-30 ~ 50°C  
Notes: battery voltage must be adjusted according to temperature.  
Please refer to our recommendation.

## Self-Discharge

3% of capacity declined per month @ 20°C (68°F).

## Battery Picture & Terminal Layout



## Dimension & Weight

Length	Dimension (± 2mm)			Total Height	Weight (± 2%)
	Width	Height			
89 mm	69 mm	101 mm	106 mm	1.59 kg	
3,5 inch	2,7 inch	4,0 inch	4,2 inch	3,5 lbs	

## Certificates



## Other relevant information

Contry of origin: **China** HS Code (harmonized system code): **85 07 20 00**  
UN-Transport declaration: **UN2800** Customs tariff number **8507 10 20 80**

## Typical Applications

- UPS & EPS
- Security Power Supply
- Power Utility
- Electrical Toys

## Constant Current Discharge (Amperes @ 20°C /68°F)

V/cell	10min	15min	20min	25min	30min	35min	40min	45min	50min	55min	1hr	2hr	3hr	4hr	5hr	10hr	20hr
1,60	12,35	9,43	8,06	6,68	5,64	4,91	4,51	4,12	3,77	3,48	3,25	1,70	1,34	1,13	0,98	0,53	0,28
1,65	11,83	9,03	7,73	6,42	5,44	4,74	4,36	3,98	3,66	3,39	3,18	1,66	1,30	1,10	0,96	0,53	0,28
1,70	11,31	8,63	7,39	6,15	5,23	4,55	4,20	3,85	3,55	3,30	3,11	1,62	1,28	1,08	0,94	0,52	0,27
1,75	10,79	8,23	7,06	5,89	5,04	4,38	4,05	3,72	3,44	3,21	3,04	1,58	1,24	1,06	0,93	0,51	0,27
1,80	10,27	7,84	6,74	5,64	4,86	4,22	3,91	3,59	3,33	3,13	2,97	1,54	1,20	1,03	0,91	0,50	0,26

## Constant Power Discharge (Watts/cell @ 20°C /68°F)

V/cell	10min	15min	20min	25min	30min	35min	40min	45min	50min	55min	1hr	2hr	3hr	4hr	5hr	10hr	20hr
1,60	23,66	18,06	15,36	12,66	10,65	9,30	8,63	7,97	7,52	6,97	6,52	3,47	2,60	2,27	1,78	1,08	0,59
1,65	22,70	17,33	14,74	12,15	10,25	8,92	8,28	7,63	7,21	6,67	6,25	3,32	2,53	2,22	1,75	1,07	0,57
1,70	21,75	16,60	14,14	11,69	9,92	8,60	7,96	7,33	6,92	6,39	5,98	3,16	2,46	2,17	1,72	1,06	0,56
1,75	20,96	16,00	13,61	11,22	9,52	8,22	7,61	7,00	6,60	6,10	5,70	3,00	2,39	2,11	1,69	1,05	0,56
1,80	20,01	15,27	13,02	10,76	9,18	7,91	7,32	6,73	6,36	5,88	5,51	2,89	2,30	2,05	1,64	1,04	0,53

Above discharge data (Amps/watts) is average values after batteries are fully charged.

Subject to revision without notice. Please contact our sales representatives for latest version.

Web: [www.jysk-akku.dk](http://www.jysk-akku.dk)

E-mail: [jvba@jysk-akku.dk](mailto:jvba@jysk-akku.dk)

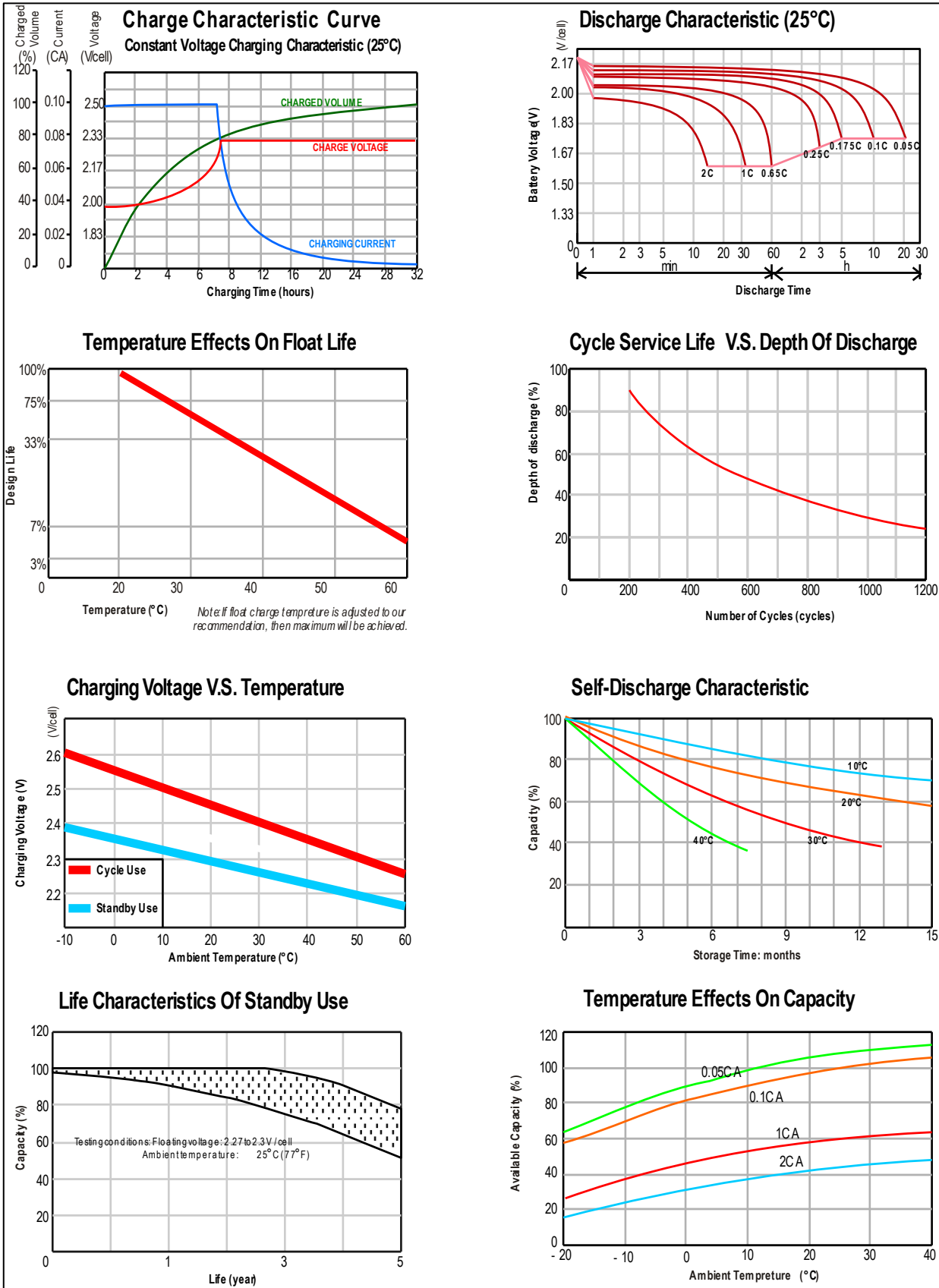
Version No.: 12-08-2021

# VEB12-5 F2

12V 5Ah / 10h



Graphs



Subject to revision without notice. Please contact our sales representatives for latest version.