

## Introduction

**Samson VEV AGM Series** is designed for tough applications and repeated deep discharging. It is superior with the long cycle life, large current discharge capability, high reliability and safety. The range is the definitive choice for golf cart, electric medical equipment, automated guided vehicles (AGV), aerial lifts, floor cleaning equipment, robotics applications.

## Battery Features

- Extra long cycle life and resistance to mechanical stress and the elements all in one battery.
- Maintenance-free
- Very high purity lead (purity rate 99.994%)
- Traction heavy duty grid design gives consistent active material adhesion and corrosion resistance.
- Fully tank formed plates for evenly formed and capacity matched plates.
- Low impurity electrolyte
- Recognized gas recombination efficiency greater than 99.9%
- Flame arresting pressure regulated safety sealing valves for safety.
- Low self-discharge
- Classified as non-spillable and not restricted for transportation by
  - > Air (IATA/ICAO provision 67)
  - > Surface (DOT-CFR-HMR49)
  - > Water (per IMDG amendment 27)

### **Electrical Specification**

Design floating Life @ 25°C /77°F	10 years
Design Life Cycles @ 80% D.O.D. (25°C)	450 Cycles

Nominal Capacity @ 25°C /77°F			
100	hour rate	1.32A to 1.75Vpc	132 Ah
10	hour rate	11 A to 1.75Vpc	110 Ah
5	hour rate	19.6 A to 1.75Vpc	98 Ah
3	hour rate	29.6A to 1.70Vpc	89 Ah
1	hour rate	66 A to 1.60Vpc	66 Ah

### Minutes of Discharge

25A to 10.5V	235	56A to 10.2V	80
75A to 10.2V	56	85A to 10.2V	45
100A to 10.2V	35		

## Cranking Amps

## Cold Cranking Amps

0°C /32°F	570	-18°C /0°F	475
-----------	-----	------------	-----

## Internal Resistance

(Fully charged battery @ 25°C /77°F ) 5 mΩ

Max. Discharge Current @ 25°C /77°F	1000 A (5S)
-------------------------------------	-------------

Short Circuit Current	1760 A
-----------------------	--------

**Charge Methods: Constant voltage charge @ 25°C /77°F**

Cycle Use	14.7 ~ 14.9V
Max. Current	33.0 A
Max. Current for best battery life	27.5 A
Standby Use	13.6 - 13.8V

Operating Temperature Range	-20 ~ 60°C
-----------------------------	------------

Notes: battery voltage must be adjusted according to temperature.

*Please refer to our recommendation.*

### Self-Discharge

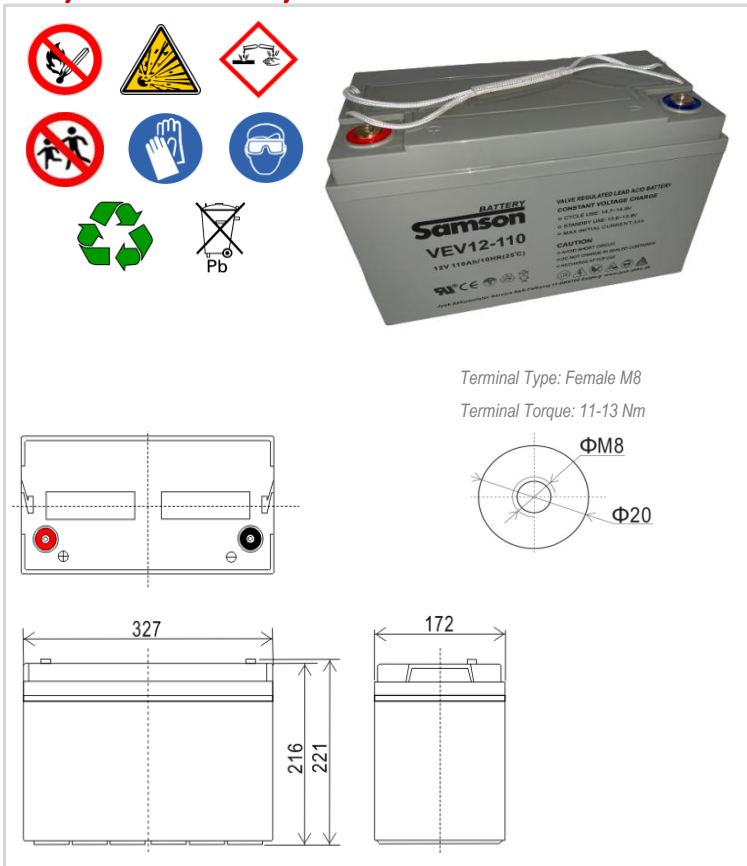
3% of capacity declined per month @ 25°C (77°F).

*Subject to revision without notice. Please contact our sales representatives for latest version.*

**Web:** [www.ivsk-akku.dk](http://www.ivsk-akku.dk)

**E-mail:** [ivba@ivsk-akku.dk](mailto:ivba@ivsk-akku.dk)

### Battery Picture & Terminal Layout



### Dimension & Weight

Dimension (± 2mm)				Weight (± 2%)
Length	Width	Height	Total Height	
327 mm	172 mm	216 mm	221 mm	34,6 kg
12,9 inch	6,8 inch	8,5 inch	8,7 inch	76,3 lbs

## Typical Applications

- ☐ Golf Cart and Trolley
- ☐ Emergency Power Supply
- ☐ Emergency lighting
- ☐ Electric Medical Equipments
- ☐ Aerial and Fork Lifts
- ☐ Tour Bus
- ☐ Sweeper
- ☐ Floor Cleaning Machines
- ☐ Marine and RV
- ☐ Automated guided vehicles (AGV)

## Other relevant information

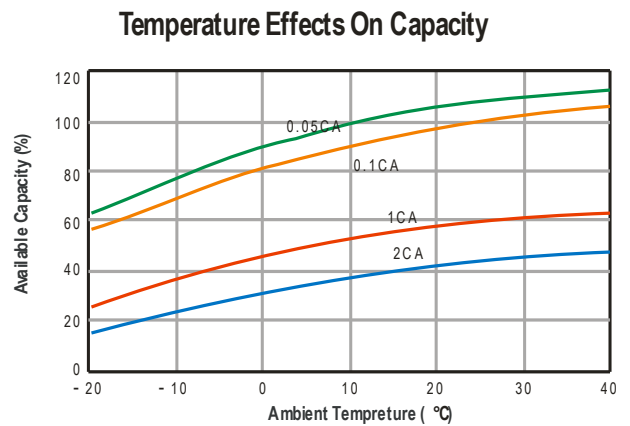
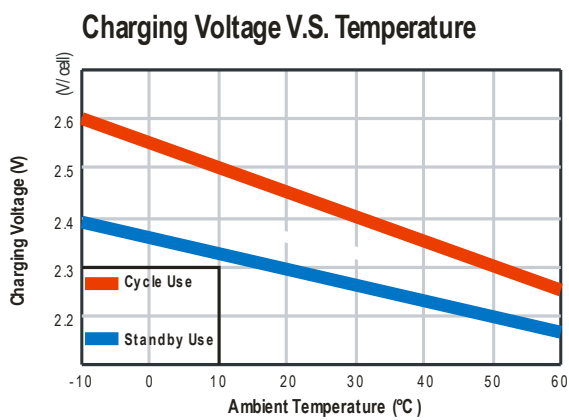
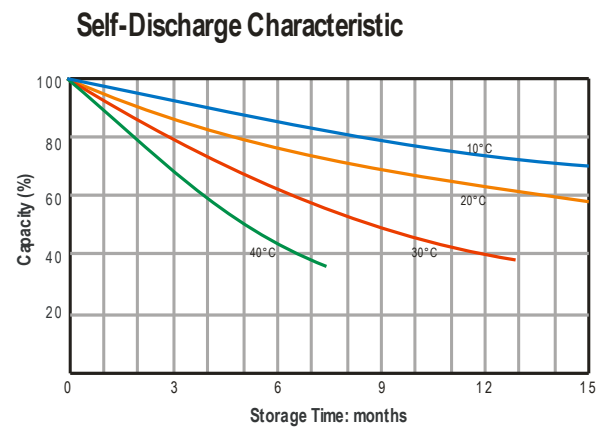
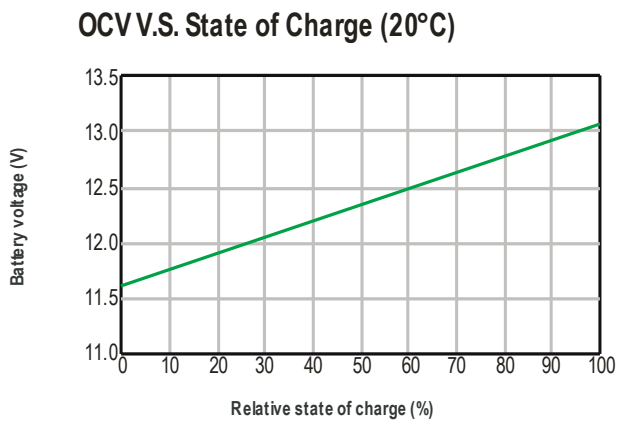
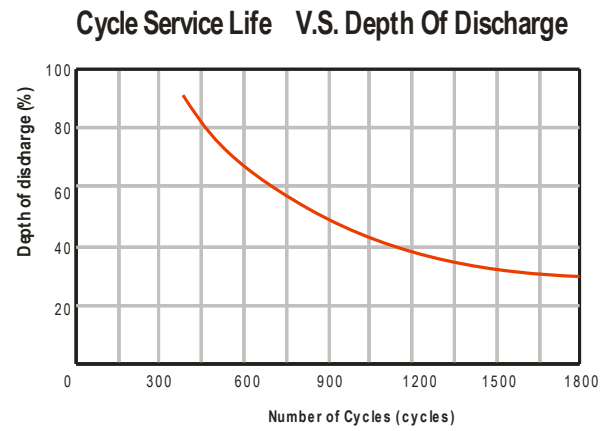
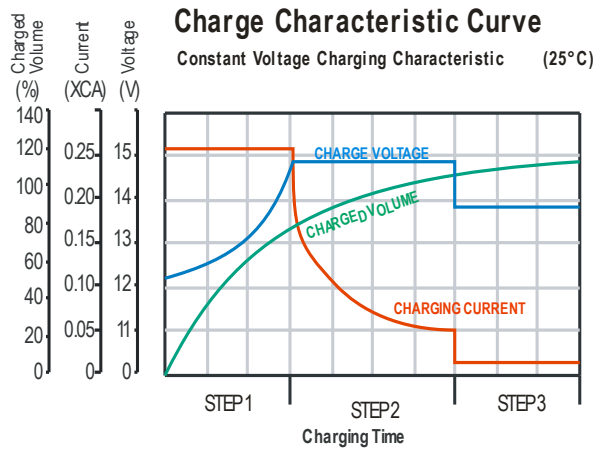
Contry of origin: **China** HS Code (harmonized system code): **85 07 20 00**

UN-Transport declaration: **UN2800** Customs tariff number **8507 10 20 80**

Hazardous materials contents (Table B: Lead and lead compounds): **24,22 Kg**

## Cetificates



**VEV12-110****12V 110Ah / 10h****BATTERY**  
**Samson****Graphs**

Subject to revision without notice. Please contact our sales representatives for latest version.

Web: [www.jysk-akku.dk](http://www.jysk-akku.dk)E-mail: [jyba@jysk-akku.dk](mailto:jyba@jysk-akku.dk)

Version No.: 03-12-2021

Page 2 of 2